

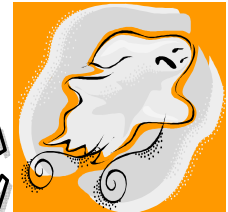
ALABAMA CYCLO-CROSS SERIES



Presents the 2nd Annual



SPOOKTACULAR CYCLO-CROSS RACE



NOVEMBER 2, 2008

SOKOL PARK

TUSCALOOSA, AL

DIRECTIONS: Exit off 1-20 at Exit 73 onto McFarland Blvd west (Hwy 82). Go 5.6 miles & turn right onto Watermelon Road. Go 2.6 miles & turn right onto Old Colony Road. The main entrance & parking lot to Sokol Park will be ahead on the left.

RACE INFORMATION (Held under USCF Permit)

Start Time	Category	Duration	Prizes/Payout	Race Fee
10:00am	Masters 35+/45+	45 mins	Awards 3 Deep	\$25.00 for all \$10 for 2 nd Race \$10 for Juniors Kids FREE!
11:00am	Men's C (CX4/5) / JRS (ages 12-18)	30 mins	Awards 3 Deep	
11:45am	Women's A (CX1/2/3) Men's B (CX 3/4) Women's B (CX4)	45 mins	Men's B - Awards 3 Deep Women's A - Payout 3 Deep Women's B - Awards 3 Deep	
12:45pm	Kid's Race (Kid's Course)	2 laps	Prizes for all	
1:00pm	Men's A (CX 1/2/3)	60 mins	Payout 5 Deep	

Additional Races: If a racer is eligible to race in more than one race and wishes to do so, the entry fee for the second race is \$10. The entry fee for the first race is the amount of the more expensive race if applicable.

Notes/Instructions:

- Racers may participate with a one day license available on site (\$10) or with a current USAC or NORBA annual license (\$60). Annual licenses may be purchased on line at <http://www.usacycling.org> or onsite.
- Registration begins at 9:00am and closes 15 minutes before the start of each race.
- Warm up will be permitted on the course only between events at the official's discretion. Race is held rain or shine.
- Helmets must be worn at all times while riding bike. Mountain bikes are permitted but bar ends must be removed.
- The promoter reserves the right to combine categories and/or prizes due to attendance. Categories under 5 racers will be combined.
- All U18 riders with a Category 1, 2 or NORBA Expert License must race with CX1/2/3 or Cat 3. NORBA Sport must race in CX 3/4.
- Alabama Cyclocross Series points are awarded individually and by team. Posted to www.bamacross.com.

PAYOUT SCHEDULE

Men 1/2/3 will be paid \$7 per rider; Women 1/2/3 will be paid \$7 per rider.
Payouts will be 5 deep as follows: 1st 40%, 2nd 30%, 3rd 15%, 4th 10%, and 5th 5%
PAYOUT NOT TO EXCEED \$499.00

(\$7 PER RIDER MEANS THAT \$7 OF ENTRY FEE MONEY GOES INTO A POT WHICH IS DIVIDED AS ABOVE PERCENTAGES SHOW)

If there are any questions, email ginas@velocityprocycle.com or call 205-344-5971

The Alabama Cyclo-Cross Series

sponsored by:

Primavera Coffee Roasters, Twin Six, Urgent Care Center, Kenda Tires, Myogenesis, Hammer Endurance, VeloCity Pro Cycle, Chain Reaction Cycles, Competitive Velo Cycling, Cycle Escape, Bob's Bikes, BBC, Wig's Wheels, Cahaba Cycles, and Bike Link